

# Electronic Proof of Delivery

## 6

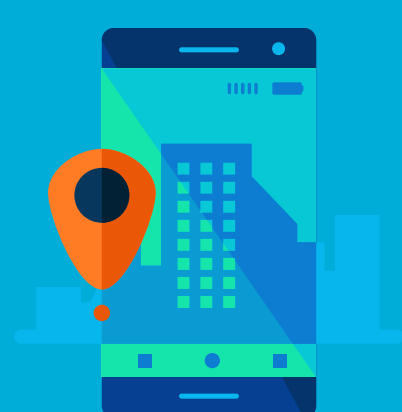
### REASONS TO ADOPT ePOD



#### 1

##### Increase efficiency and accuracy

Eliminate paper-based process to improve staff productivity and accuracy of a delivery process.



##### Shipment tracking and proactive delivery updates

Real-time updates to make the information immediately available to involved parties when they need it.

#### 2

#### 3

##### Improve customer service

Customer feedback and queries can be answered quickly, ensuring high levels of service.



##### Increase cash flow and reduce costs

Generate accurate invoice immediately after distribution meaning earlier confirmed deliveries, reducing the time to invoice, speeding up billing cycles and improving company cash flow.

#### 4

#### 5

##### Reduce delivery disputes

Record digital signatures, photographs, customer feedback with timestamp, date, and geo-stamp to quickly resolve customer disputes and manage claims for shortages or damaged deliveries.



##### Reduce administration time

Send notifications to reduce customer follow-ups and speed up admin work required to key-in proof of delivery entries, calculate freight cost, etc.

#### 6